

CRES Steam Generators

All CRES heaters provide the most compact and powerful solution in the heating of moving fluids, including liquids, gases and transition substances like saturated steam - super heated steam.

All CRES heating elements are electrically isolated so contaminants in the flow stream will not affect the life of the heater. This is critical while heating compressed airs and gases where compressor oils and debris enters the heated media stream.

The New Standard in Steam Generation

Infinity Fluids Corporation (Sales)

346 Franklin Street
Worcester, MA 01694
ph: 888.565.8137
fax: 508.347.3674
sales@infinityfluids.com

www.infinityfluids.com



CRES-SG with NEMA 4X Poly Head shown

CRES Inline-Instant Steam Generator: Simple, powerful, economical and smart

CRES-SG Inline-Instant Boiler, Instant Steam Generator

The first and only instant clean steam boiler

Infinity Fluids has developed and patented the only inline-instant steam generator available. All applications which use cumbersome, customary boiler and steam generation technology can now benefit from the Infinity CRES design. The CRES-SG can produce steam within seconds of activation—from a cold start. This patented technology is now available for all of your plant or clean steam operations. From direct steam heating for parts cleaning, or pure steam applications like autoclaves and sterilizers, the Infinity CRES-SG Boilers can save you money, space, power and time.

No fumes, fuels or stacks to be concerned with. All Infinity CRES-SG units are fully electric and ideal for any application where space savings, utility savings and economy are required. Use a single unit to heat or power multiple units or stages.

Clean compact and economical steam is no longer impossible. Infinity can design the perfect steam generator for your most demanding applications.



CRES-SG-208-0120
shown



CRES-SG-48-0090-K-XP
shown



Worcester, MA
ph: 888.565.8137

www.infinityfluids.com

The CRES-SG has no moving parts, scaling and calcification will not affect the operation of the unit causing negligible effects on generator efficiency.

If you are looking to save money, or for a true competitive advantage call an Infinity salesman to discuss your process.

BENEFITS AND FEATURES

- Ultra compact size and weight
- Clean non porous stainless steel elements with no concern of degradation, stream contamination with carbon steel, or porous electrified elements.
- No water quality requirements; straight tap water to pure DI/RO water
- Significantly reduce the size of your equipment with our new technology, while decreasing the overall weight at the same time
- Reduce the power requirements of your process by 30-40%
- No more wasting power with "Stand-by Idling"
- Save money; the CRES-SG is typically 40-50% less expensive than customary boilers/steam generators.
- Simple element removal for inspection and cleaning

SPECIFICATIONS

- Compact heaters from 250 watts to 250kW
- All SS construction standard
- Process temperatures to 600° C (1200° F)
- Atmospheric and high operating pressures
- No booster pumps required
- Optional finishes, electro-polished, passivated and bright annealed for pure clean steam
- Custom sizing and designs for all processes
- Standard type k t/c or 100Ω Plat RTD available

APPLICATIONS

- Food preparation equipment
- Steam reformation/steam reform
- Fuel cell heating and preheating
- Printing, cleaning, pharmaceutical, bio-tech, sterilization and plastics industries
- Purification
- Humidity generation
- Metal, poly and ceramic parts cleaning



CRES-SG-24-0040-K shown

*Infinity's CRES-SG is the **ONLY** inline/instant steam generator available. Choose from our standards or create your own custom design.*

- Fuel cell gas and liquid heating
- Printing, cleaning, pharmaceutical, bio-tech, sterilization and plastics industries
- Purification
- Humidity generation
- Metal, poly and ceramic parts cleaning

ACCESSORY EQUIPMENT

Power and temperature control loop:



Representative unit shown, not for design.

Allows for incredibly accurate control of temperature and pressure by means of temp. Infinity will choose and match the correct control unit for your specific instant steam generator. These unit will provide +/-1 deg control of your process and be capable of accepting the overtemp switch mounted in the head of the steam generator.

Flow control pump:



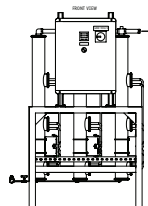
Representative unit shown, not for design.

Accurately control the flow leading to your steam generator with highly precise positive displacement pumps. Infinity uses durable and precise pumping systems for your application, these units can be set with a single turn pot to your exact flow requirements.

Flow meter:

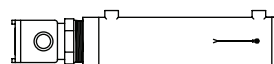
Accurately monitor the flow leading to your steam generator with the flow metering devices. Use simple float style units or high resolution digital units.

Modular/turn key steam generator system:



If you are not an equipment manufacturer or do not have time to mount and wire the separate parts, for a little extra cost allow infinity put together the entire package for you in an easy to use component turn-key design. Simply wire set temp and flow, accurately make steam to the desired quality you require.

Explosion proof steam generator:



Infinity offers the only inline/instant explosion proof heater including Class 1-2 and Div 1-2, ATEX etc. No Standby idling, no long startup cycles, with only 1/4 the space required for the Infinity CRES-SG-XP versus standard designs.



Worcester, MA
ph: 888.565.8137

www.infinityfluids.com

CRES-SG Specification Table

Model No.	Vol (lbs/hr)	A(in.)	B(in.)	C(FNPT Std.)	D(in.)	Watts (kW)	Volts	Phases	Amps
CRES-SG-12-0010-K	3	12	9.75	1/4	2.0	1.0	120	1	8
CRES-SG-12-0020-K	6	12	9.75	1/4	2.0	2.0	120	1	17
CRES-SG-24-0040-K	13	16	13.25	1/4	3.0	4.0	240	1	17
CRES-SG-24-0060-K	20	16	13.25	1/4	3.0	6.0	240	1	25
CRES-SG-48-0080-K	26	16	13.25	1/4	3.0	8.0	480	1	17
CRES-SG-48-0080-K-3P	26	24	21.5	1/4	3.0	8.0	480	3	10
CRES-SG-208-0100-K-3P	33	20	17.5	1/4	3.0	10.0	208	3	28
CRES-SG-48-0100-K-3P	33	24	19.75	1/4	4.0	10.0	480	3	12
CRES-SG-208-0150-K-3P	49	24	19.75	3/8	4.0	15.0	208	3	42
CRES-SG-48-0150-K-3P	49	24	19.75	3/8	4.0	15.0	480	3	18
CRES-SG-208-0200-K	66	24	19.75	3/8	4.0	20.0	208	3	56
CRES-SG-48-0200-K-3P	66	24	19.75	3/8	4.0	20.0	480	3	23
CRES-SG-208-0240-K-3P	82	24	19.75	1/2	4.0	24.0	208	3	66
CRES-SG-48-0240-K-3P	82	24	19.75	1/2	4.0	24.0	480	3	27
CRES-SG-48-0360-K-3P	118	40	35.5	3/4	4.0	36.0	480	3	44
CRES-SG-48-0480-K-3P	156	40	35.5	1	4.0	48.0	480	3	58
CRES-SG-48-0060-K-3P	198	40x2	35.5	1	4.0	60.0	480	3	72
CRES-SG-48-0720-K-3P	236	40x2	35.5	1-1/4	4.0	72.0	480	3	87
CRES-SG-48-1000-K-3P	330	40x3	35.5	1-1/4	4.0	100.0	480	3	121
CRES-SG-48-1500-K-3P	495	40x3	35.5	1-1/2	4.0	150.0	480	3	181
CRES-SG-48-2000-K-3P	620	40x5	35.5	1-1/2	4.0	200.0	480	3	241
CRES-SG-48-2500-K-3P	820	40x5	35.5	2	4.0	250.0	480	3	301

- Add (-CS) to end of part number to ensure all materials and fabrication standards are followed for clean applications.
- Voltages from 12volts-600volts available
- Most standard inlet/outlet fittings available
- Wattages from 100-250,000

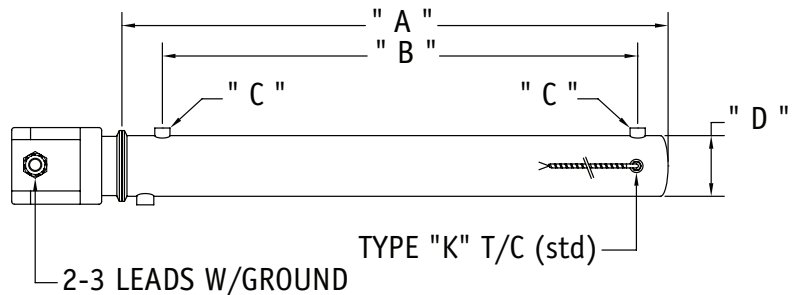
CRES-SG

All CRES-SG Steam Generators will provide the most compact powerful solution for instant steam generation. The CRES-SG is the only product which can quickly and far more efficiently generate steam from a constant or intermittent flow water stream.

Most CRES-SG units are built on the patented CRES (Compact Resistive Element System) design, making it the only product available to operate in such a demanding fashion. Where all other heaters fall apart, CRES Shines.

CRES-SG Heater Design

COMPONENT LEVEL STEAM GENERATOR



- Standard design includes stainless and brass components
- Specify Clean Steam Requirement for all critical steam applications



Worcester, MA
 ph: 888.565.8137
www.infinityfluids.com